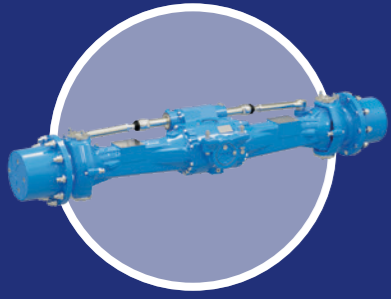


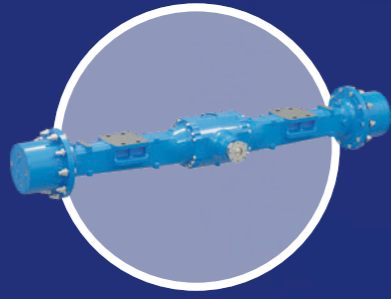
# Full-System Solutions for Wheeled Excavators

Dana's innovative approach delivers best-in-class engineering solutions to help OEMs maximize their offerings. For wheeled excavators, we provide a complete drivetrain featuring front and rear axles, driveshaft, and transmission for both conventional and electrified vehicles. Dana's Spicer® drivetrain system integrates outboard wet disc brakes to ensure jerk-free braking and smoother operation. This contributes to the already excellent comfort enjoyed by the driver, who also benefits from precise maneuvering capabilities and ease of use. Built to accept a broad range of power units, customers are free to choose the motor that works best.



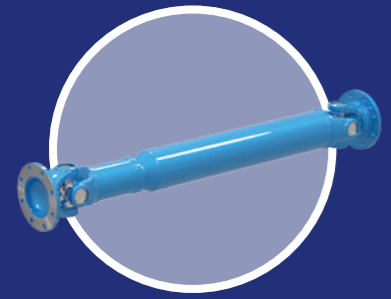
## Spicer® Planetary Steering Axle

- Unique brake design reduces parasitic power loss
- Precise maneuvering capabilities and ease of use



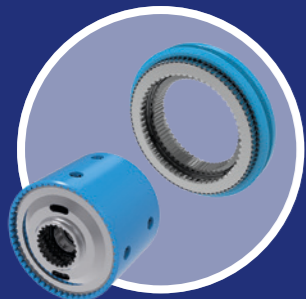
## Spicer® Planetary Non-Steering Axle

- Multiple configurations available
- Outboard wet disc brakes for smoother operation



## Spicer® Driveshafts

- Ideal for the rigorous demands of most mobile off-highway applications
- Designed for minimal maintenance, longer life, and reduced operating costs



## Graziano® Shifting Solutions

- High-efficiency powershifts
- Enhanced shifting performance and driver comfort



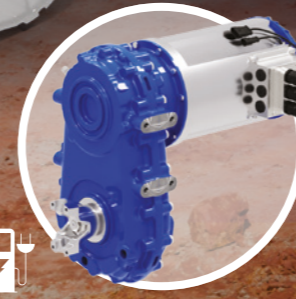
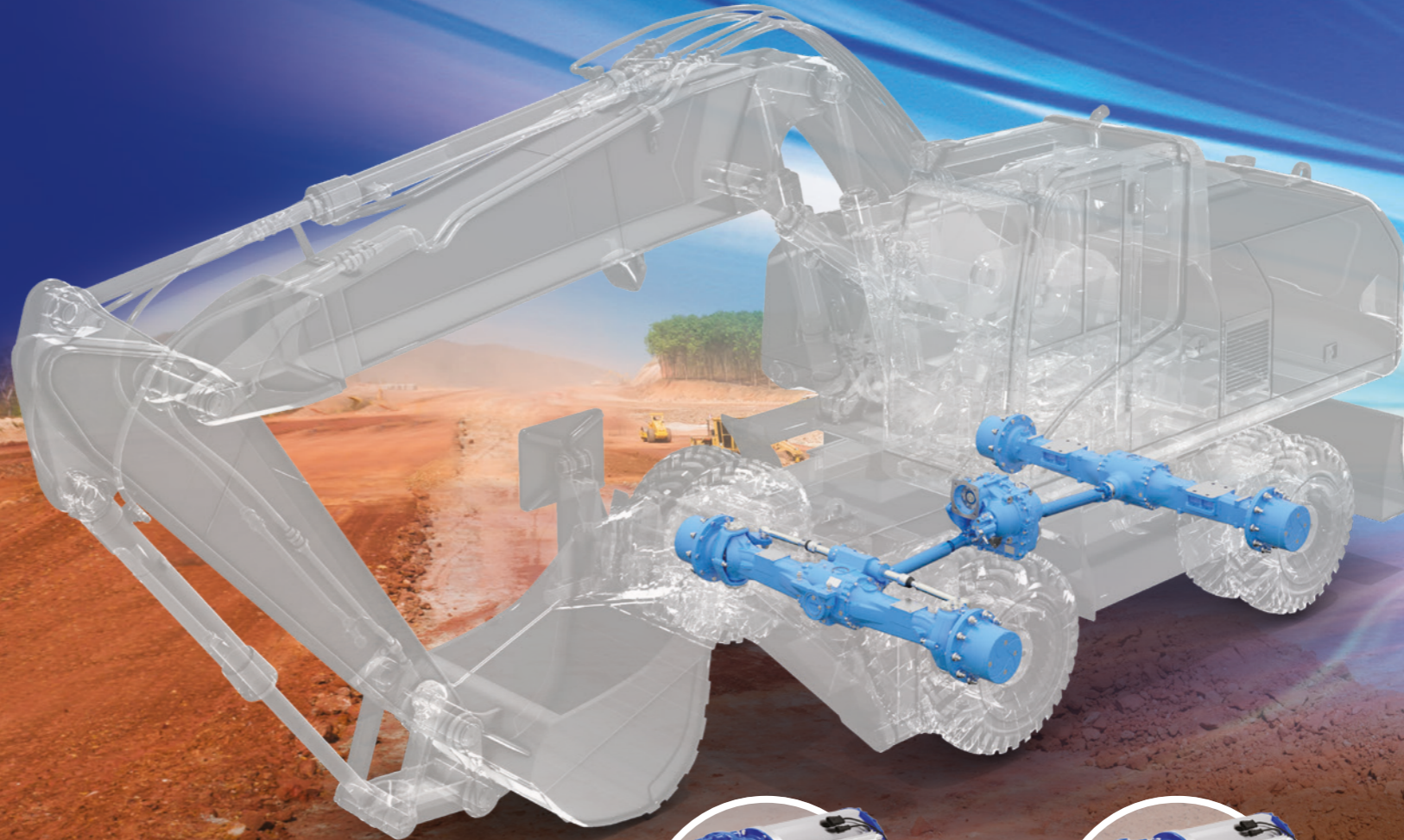
## Spicer® Powershift Transmission

- Traction continuity and smooth operations in all conditions
- Enables the engine to run at its most efficient speed for better fuel economy



## Spicer® Two-Speed Gearbox

- Extremely compact and versatile
- Enhances vehicle mobility and precise shifting



## Spicer® eSG001

- High-efficiency single-speed
- Ideal for high-performance motors
- Compact and light



## Spicer® eSG101

- High-efficiency single-speed
- Ideal for high-performance motors
- Enhances vehicle mobility



## Spicer® eSG102

- High-efficiency, two speed
- Ideal for high-performance motors
- Enhances vehicle mobility